

# Seasons Best – Winter

FABRICS BY KIM SCHAEFER



Quilt designed by:  
**Jean Ann Wright**

Quilt Size: **48" x 56"**

[andoverfabrics.com](http://andoverfabrics.com)



andover



makower uk  
*The Henley Studio*

Free Pattern Download Available

1384 Broadway New York, NY 10018  
Tel. (800) 223-5678 • [andoverfabrics.com](http://andoverfabrics.com)

# Seasons Best – Winter



Introducing Andover Fabrics new collection: **SEASONS BEST – WINTER** by Kim Schaefer  
Quilt designed by Jean Ann Wright

Quilt finishes 48" x 56"

*Spruce up your holiday décor with this cheery quilt featuring smiling snow people, snowflakes, and cardinals. The novelty print panels lend the quilt more complexity than the piecing demands. The trees are made with a fun mix of geometric prints that will brighten any room.*

## Cutting Directions

**Note:** Read assembly directions before cutting patches. All measurements are cut sizes and include 1/4" seam allowances. A fat 1/8 is an 9" x 20"-22" cut of fabric. Borders are cut the exact lengths required plus 1/4" seam allowances. WOF designates the width of fabric from selvedge to selvedge (approximately 42" wide).

### Fabric A

Fussy-cut (3) panels 7 1/2" x 42 1/2", centering motifs

### Fabric B

Cut (2) side borders 5 1/2" x 46 1/2", cut crosswise and pieced  
Cut (2) top/bottom borders 5 1/2" x 38 1/2", cut crosswise

### Fabric C

Cut (6) sashes 1 1/2" x 42 1/2"  
Cut (2) top/bottom borders 1 1/2" x 36 1/2"

### Fabric D

Cut (6) strips 2 1/2" x WOF for binding  
Cut (2) side borders 1 1/2" x 44 1/2"  
Cut (2) top/bottom borders 1 1/2" x 38 1/2"

### Fabric E

Cut (4) corner squares 5 1/2" x 5 1/2"  
Cut (12) Template 2  
Cut (12) Template 2 reversed  
Cut (24) rectangles 2" x 1 1/2"

### Fabric F

Cut (12) rectangles 2" x 1 1/2" for trunks

### Fat 1/8 Prints

Cut (2) Template 1 (tree) from each (12 total)

### Backing

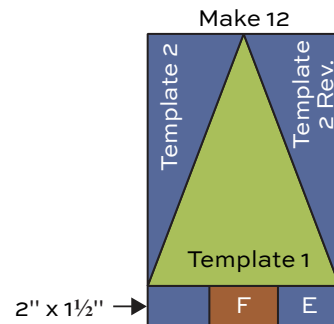
Cut (2) panels 33" x 56", pieced to fit quilt top with overlap on all sides

## Fabric Requirements

		Yardage	Fabric
<b>Fabric A</b>	panels	1 repeat 2/3 yard	7044-K
<b>Fabric B</b>	outer border	1 yard	7051-KM
<b>Fabric C</b>	border, sashes	3/8 yard	7054-KB
<b>Fabric D</b>	border, binding	3/4 yard	7055-KG
<b>Fabric E</b>	blocks	1/2 yard	3135-G7
<b>Fabric F</b>	trunks	fat 1/8 yard	7059-KO
<b>6 Prints</b>	TREES	fat 1/8 each	7050-K 7052-KL 7053-KM 7056-KY 7057-NG 7058-KR
<b>Backing</b>		3 1/4 yards	7045-K

## Making the Quilt

1. Make acrylic templates for Templates 1 and 2. Mark around Template 1 on the appropriate tree fabrics. Templates 2 and 2 reversed are cut from Fabric E. Turn Template 2 over to mark the 12 reversed patches. Cut out fabric patches. Lightly mark the sewing line at the angled corners of the trees and background patches. Referring to the Block Diagram, sew Template 2 and Template 2 reversed patches to sides of the tree, matching the marked sewing lines. Press seam allowances away from the tree. Sew the 1 1/2" end of a Fabric E rectangle to the side of a Fabric F trunk. Repeat on the other side of the trunk. Sew the trunk unit to the bottom of the tree. Press the seam allowance toward the tree. The tree should measure 7 1/2" tall and 5" wide. Repeat to make 12 blocks.



**Block Diagram**

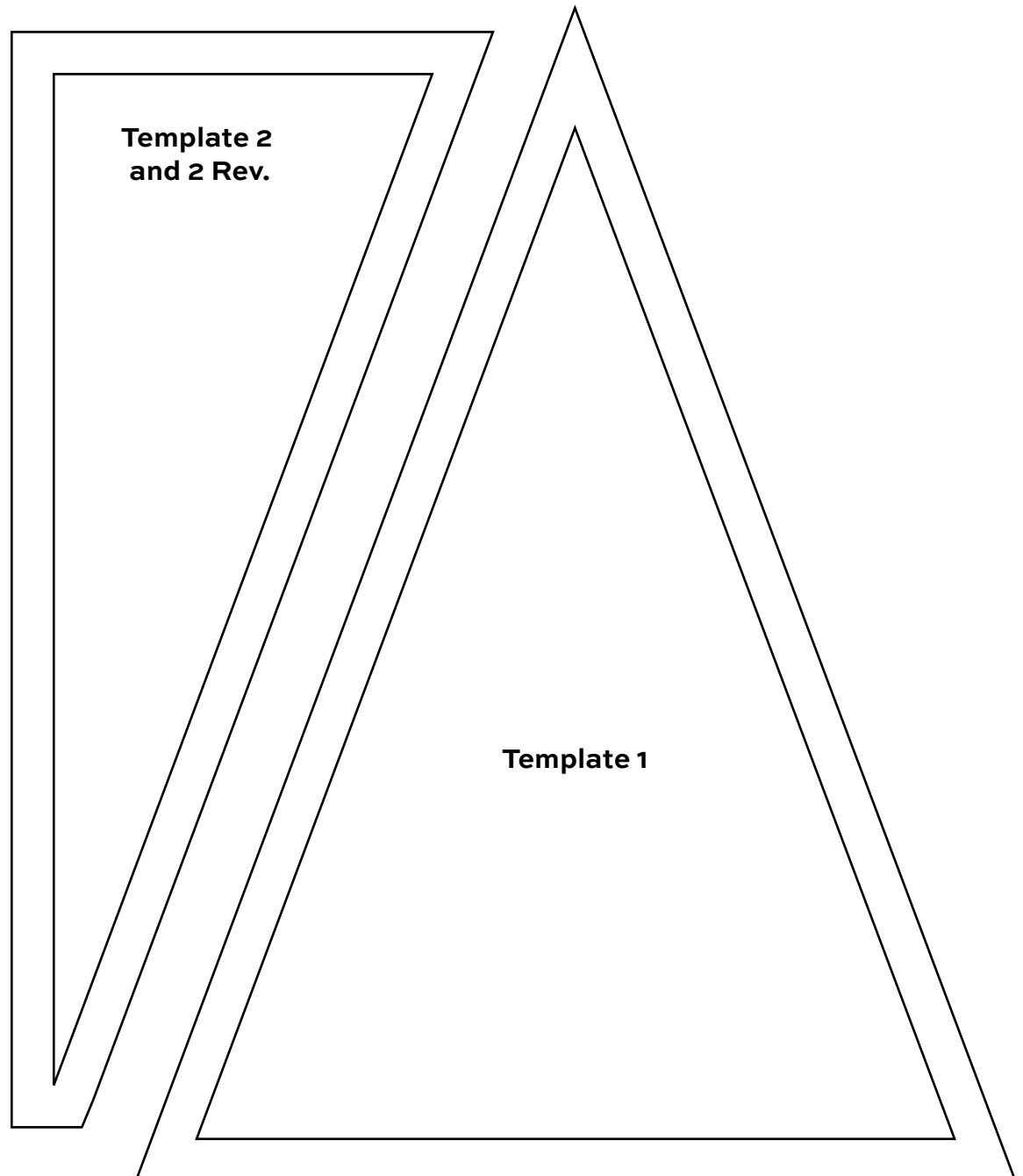
# Seasons Best – Winter Quilt

---

2. Refer to the Quilt Diagram. Sew 6 tree blocks in a vertical column, arranging the trees as you wish. Press seam allowances toward the trunk unit. The column should be 42½" long. Make a second tree column with 6 blocks.
3. Referring to the Quilt Diagram, sew Fabric C sashes to sides of each Fabric A panel. Press seam allowances toward the panels. Sew the tree columns between the 3 panels. Press seam allowances toward the sashes.
4. Sew Fabric C borders to the top and bottom of the quilt. Sew Fabric D borders to the sides, and then to the top and bottom.
5. Sew Fabric B side borders to the quilt. Sew Fabric E 5½" squares to the ends of remaining borders and sew to the top and bottom.

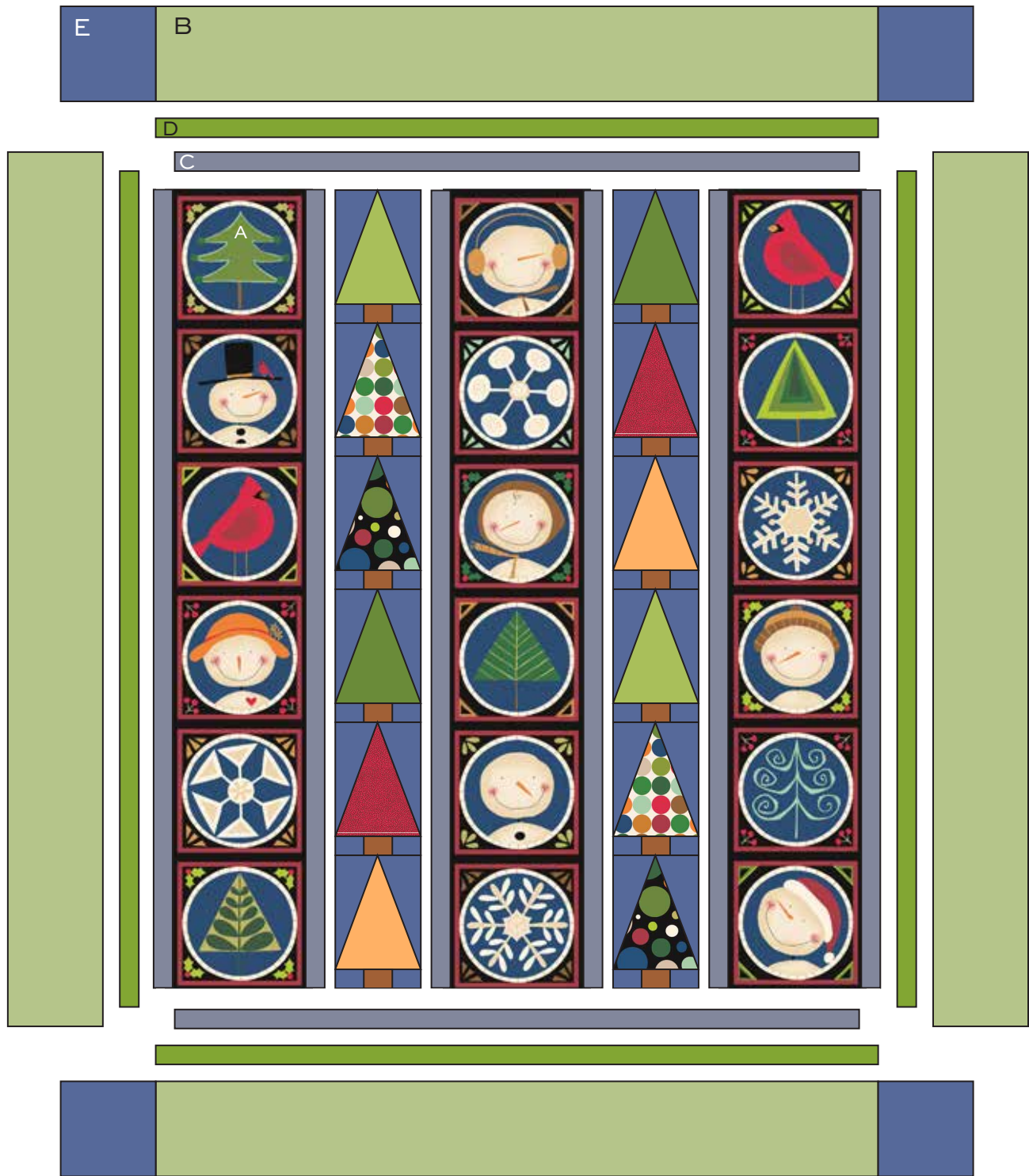
## Finishing the Quilt

6. Layer the quilt with batting and backing; baste. Quilt in the ditch around block patches. Quilt around the printed motifs in the Fabric A panels and outer border. Bind to finish the quilt.





# Seasons Best – Winter Quilt



Quilt Diagram



# Seasons Best – Winter

FABRICS BY KIM SCHAEFER



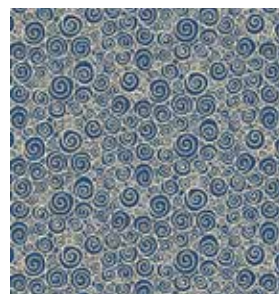
7044-K\*



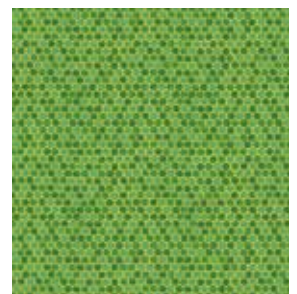
7052-KL\*



7053-KM\*



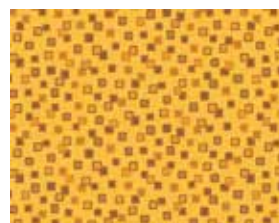
7054-KB\*



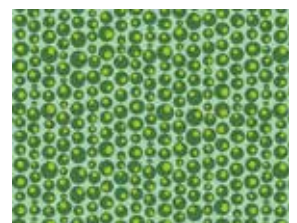
7055-KG\*



7045-K\*



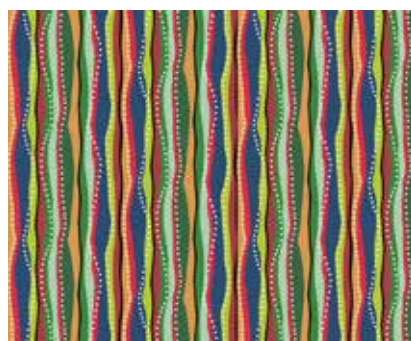
7056-KY\*



7057-JG\*



7050-K\*



7051-KM\*



7058-KR\*



7059-KO\*



3135-B4\*



3135-G7

\*Indicates fabrics used in quilt pattern. Fabrics shown are 10% of actual size.

andover

•  
•  
•  
•  
makower uk  
*The Henley Studio*

Free Pattern Download Available

1384 Broadway New York, NY 10018  
Tel. (800) 223-5678 • andoverfabrics.com

12/27/13